

YMC Flash Chromatography



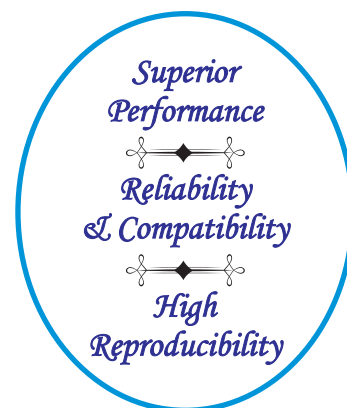
YMC

- ◆ **Pre-packed Cartridges**
- ◆ **Bulk Media**
- ◆ **Empty Loaders**
- ◆ **TLC Plates**
- ◆ **Accessories**



PRODUCT HIGHLIGHTS

- ◆ Low fines; Neutral pH; 100% guaranteed leak-free
- ◆ Clean, pre-packed, pharmaceutical-grade polypropylene cartridges
- ◆ Made with ultra-pure silica gel (we can pack your own source)
- ◆ Tight particle-size distribution to avoid leaching and/or channelling, no tailing
- ◆ Water activity and controlled water content for silica
- ◆ Innovative and semi-automated packing technology
- ◆ Proprietary coating technology for TLC plates available
- ◆ Many years of "lot-to-lot" reproducibility



100% Compatibility With All Flash Chromatography System

Teledyne

Biotage

Analogix

Armen

Yamazen

Moritex

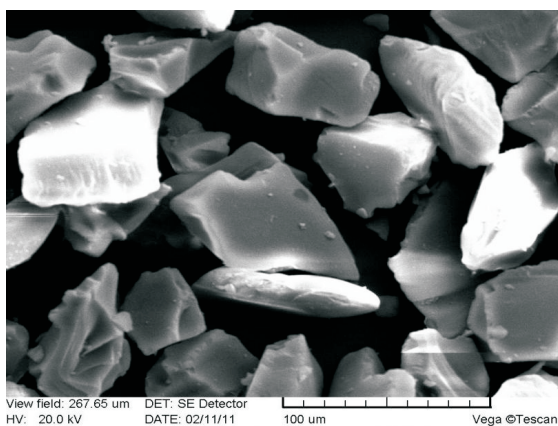
Buchi

Available Size in Pre-Packed Cartridges	Available Size in Empty Cartridges	Phase Available in Bulk Media*
4g, 12g, 25g, 40g, 80g, 120g, 220g, 330g, 800, 1600g, 3000g	4g, 12g, 25g, 40g, 80g, 120g, 220g, 330g	Silica, C18, C8, AQ(C18 and C8), C4, Cyno, Diol, Phenyl, ARG, Phenyl-Hexyl, Amine, SAX, SCX, Neutral, Basic, Acidic Alumina **(above phase are available in almost all particle)

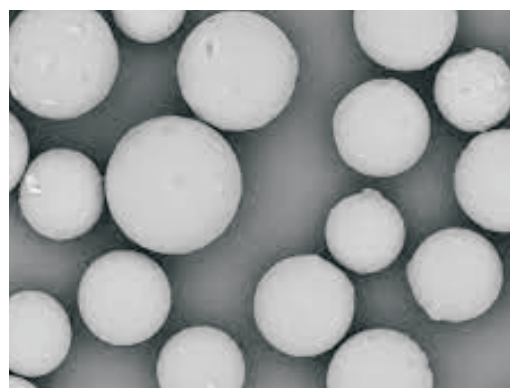
* Subject to availability in Spherical and Irregular type

** Kindly enquire with us for the available particle sizes in different phases.

SEM Images of Silica Gel



SEM picture of 40-63 μm irregular silica gel



SEM picture of 20-45 μm spherical silica gel

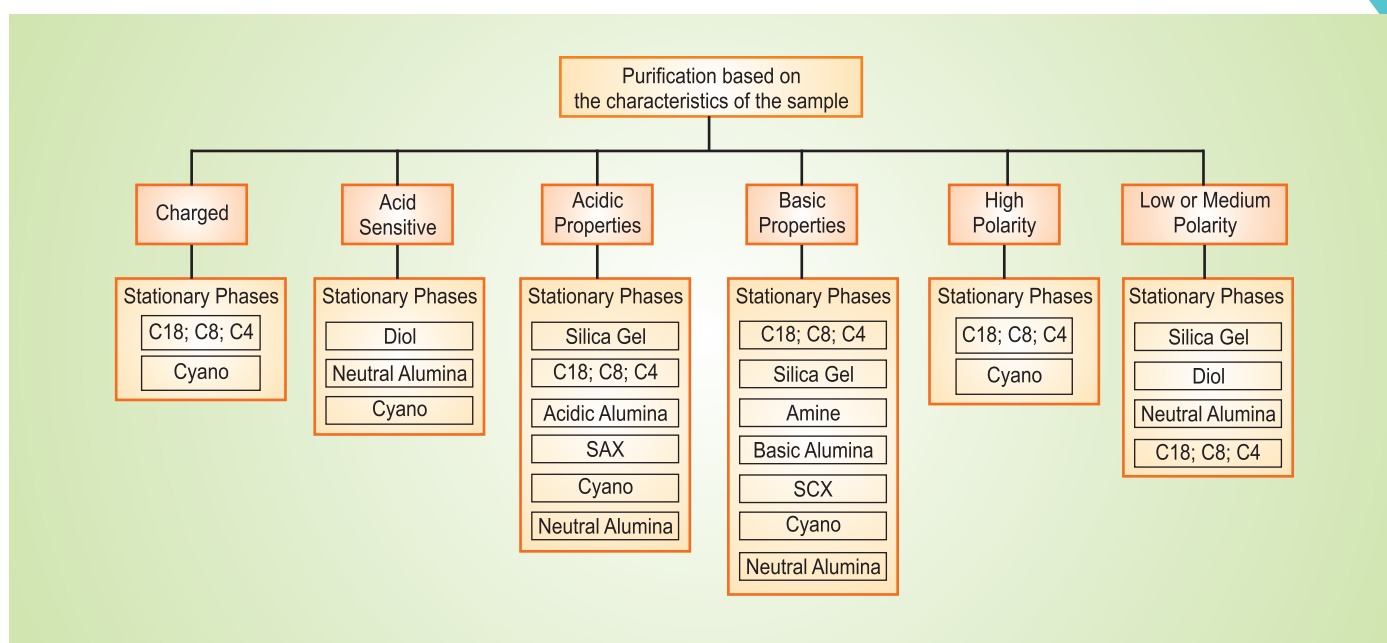
The benefits for *irregular* silica gel

Cost efficient material; Irregular particle shape with smooth edges; Very narrow particle size distribution; 40-63 μm and 25-40 μm .

The benefits for *spherical* silica gel

Consistency reliability, reproducibility; No contamination, Superior separation; Symmetrical peaks with no tailing; Greater loading capacity

Flash Column Sorbent Selection Guide



Tips for Using YMC Flash Chromatography Products

- YMC silica flash columns are disposable and for single use, but with proper handling, these cartridges can be reused without sacrificing performance. For multiple usages, simply air dry the flash column using compressed air and store the column in a sealed bag.
- Solid sample loading is a useful technique to load sample to be purified onto a column, particularly in the case of low-solubility samples.
- For optimum use of the flash column, please use the eluents which have been filtered through a 0.45 μm filter membrane to remove any impurities.